

PARTNERS IN HOPE

2022 IMPACT REPORT

EMPOWERING CONNECTIONS



Giving Hope. Loving Neighbors. Growing Hearts.

A LETTER FROM OUR EXECUTIVE DIRECTOR

Social Connections Matter!

*“Dear children, let us not love with words or speech but with actions and in truth.”
— 1 John 3:18 (NIV)*

Partners in Hope – Texas (PIH) continues to be amazed at God’s provision to our ministry, and we are thrilled to share our 2022 Impact Report with you! In it you will find both stories and numbers related to lives changed. But, most importantly, we hope you’ll see how your support has created meaningful connections for so many who otherwise would try to navigate life alone.

In 2011, God placed this mission within our hearts: go out into our neighborhoods and walk with those who are feeling hopeless, strengthening them through intentional relationships and community resources. And what we have witnessed for over a decade continues to be supported through scientific studies. Consider a few recent research findings:

- Social isolation can increase the risk of heart disease by 29%, stroke by 32%, and dementia by 50%.
- Social isolation is associated with greater sensitivity to pain, suppression of the immune system, diminished brain function, and less effective sleep.
- Job loss, depression, and relationship dysfunction can also be attributed to social isolation.

But there is good news! Major studies have also found that:

- Good relationships are the most powerful predictor of long-term physical and mental health.
- People in satisfying relationships report less depression and more happiness.

And PIH gets to witness this good news daily! Social connections matter—God’s design is for people to be part of a caring and supportive community. He has given us the privilege of equipping individuals and organizations to walk alongside others over time, which empowers the community to be part of the answer to the complex problem of social isolation.

Thank you for your prayers and all the ways you support Partners in Hope. Read on to see how YOU have made an impact!

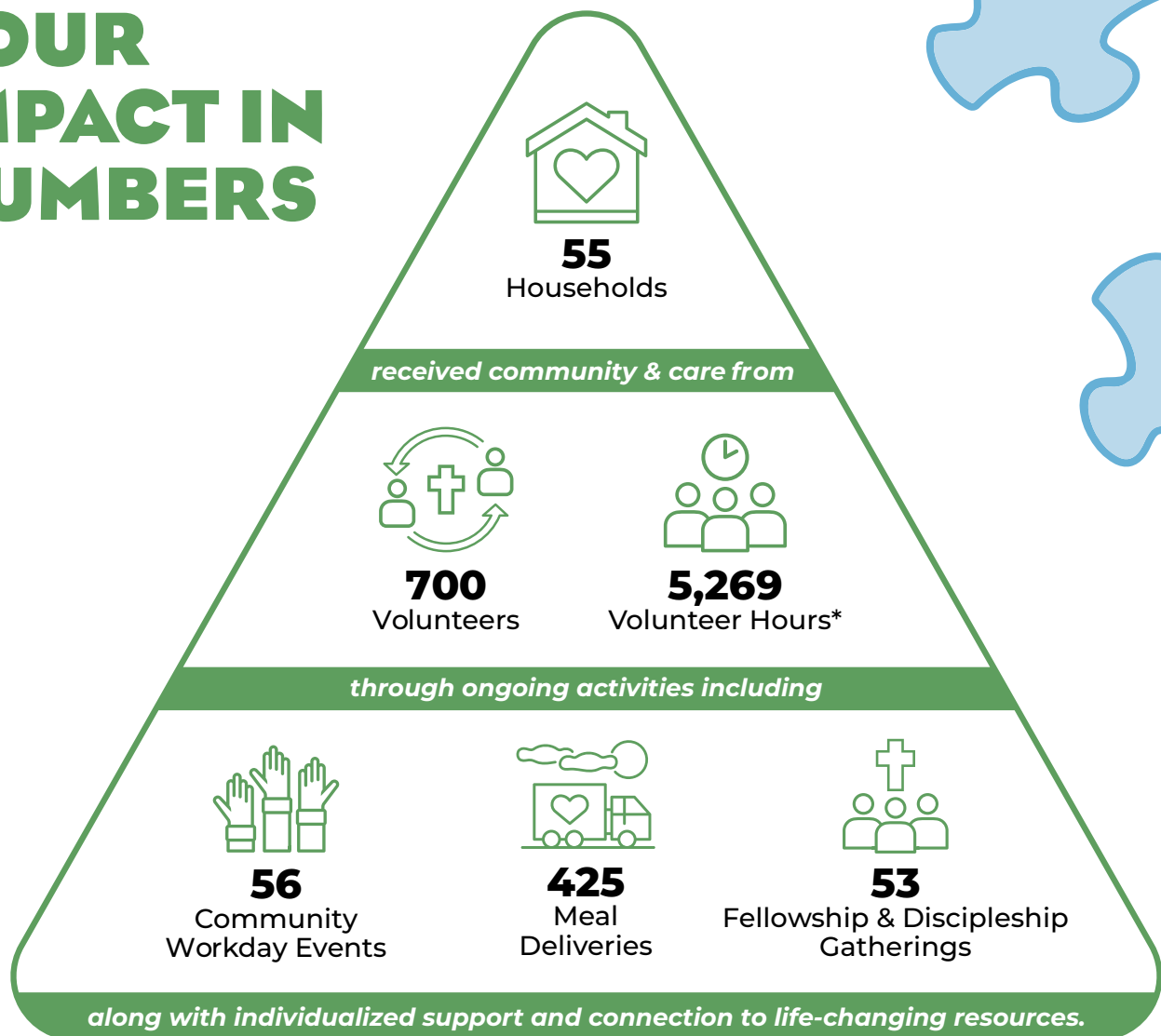
In Christ,



Matt Peacock

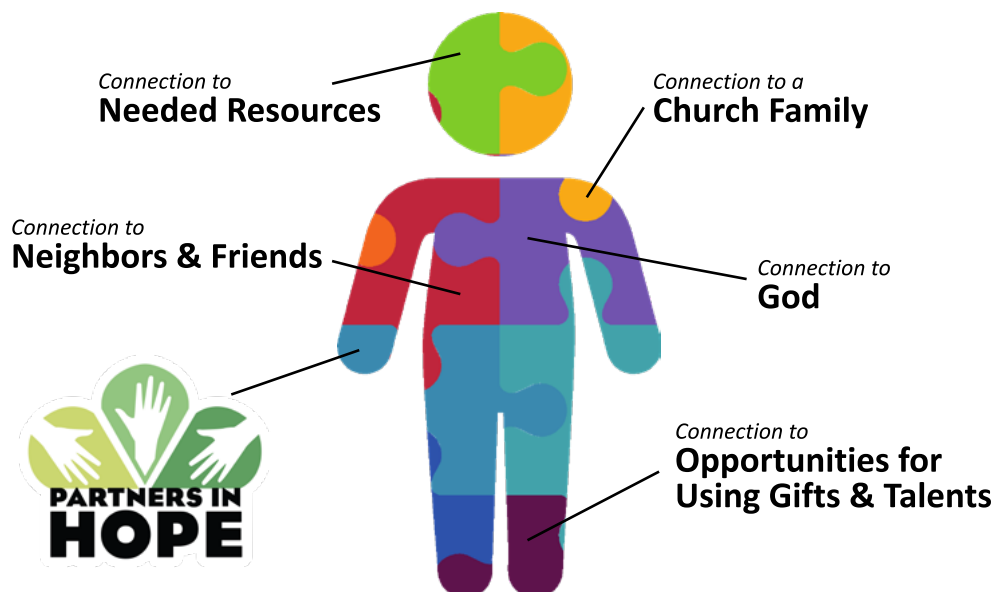
Matt Peacock
Executive Director

YOUR IMPACT IN NUMBERS



*Worth \$157,807 when multiplied by nonprofit hourly value of \$29.95

Making Connections That Change Lives



YOUR IMPACT IN PHOTOS

Enjoy these month-by-month photos to give you a snapshot of the many wonderful ways connections between our families and the community are made throughout the year.



JANUARY

We started the year by building a ramp for Nancy, who struggles with mobility and was finding it difficult to leave her home because it was unsafe for her to navigate the stairs. PIH volunteers were happy to provide a solution. "It's changed my whole outlook," Nancy said as she walked up and down her new ramp with a handrail.



FEBRUARY

As our fellowship activities picked back up following a pandemic pause, Crystal opened her home to host a Ladies' Coffee Connection gathering. Coffee Connection is an opportunity for women to gather regularly to visit, pray, and explore God's Word together. Everyone is holding a handcrafted flower that Crystal made for each woman there.



MARCH

We love to help our families find ways to share their gifts in the community. Terri led a cookie decorating class with some of our Spicewood area families, hosted by Bee Creek UMC, a church partner. Terri has now provided three different cookie decorating classes for us, and our families are asking for more!



APRIL

Executive Director Matt Peacock presented our first "Walking with Others" Relational Ministry Volunteer Training at Lake Travis UMC. After the training, ten groups were sent out into the community to serve our families using some of the skills they had just learned.



MAY

PIH was blessed to have B.J. Rogers join our staff as Director of Ministry for Cedar Park/Leander in the spring. Right away, he organized our first CPL Community Workday in April. Then we held our second one in May at Marie and John's home, where we helped move an RV, installed electricity access, and built a storage shed.



JUNE

We had a Donor Appreciation Social at the Oasis Brewery, where we welcomed new staff including Carissa Bickling, Community Connections Manager for Cedar Park/Leander. It was a fun, casual time to meet new friends and catch up with ones we hadn't seen in a while. We do love our donors!

YOUR IMPACT IN PHOTOS



JULY

Lakeway Church youth invited our families to have their cars washed. Our families didn't even have to leave their cars to enjoy the company of some enthusiastic car washers!



AUGUST

Our first Cedar Park/Leander Fellowship Gathering was hosted by New Hope First Baptist Church! These monthly fellowship events (usually supper on Sundays) bring together Partners in Hope families and volunteers with members of local churches and the community. These gatherings are always a great time of conversation and fun!



SEPTEMBER

Each Community Workday is different, customized to meet the needs and priorities of our families. Darla wanted to preserve this porch, an outdoor space special to her, after her home was heavily damaged by a fire. God made a way for it to happen through the efforts of a great volunteer team.



OCTOBER

In 2022 Partners in Hope became a part of the Christian Resource Center (CRC), a network of ministries in Cedar Park/Leander that work together to give hope to family members of all ages within the community. The CRC let us use their facilities for a Fellowship Gathering in October. We have been blessed by our partnership with this wonderful ministry!



NOVEMBER

The air was buzzing with excitement as we were able to gather in person once again for our traditional "A Night at the Oasis" Fall Fundraiser. Matt Peacock shared celebrations from the past and a vision for the future at this dinner attended by more than 150 guests.



DECEMBER

Hope-Filled Christmas volunteers helped decorate for Christmas and provided gifts for our families. Here, our ladies show off handcrafted Christmas gifts provided by the Mature Adult Ministry from ACTS Church, a church partner in Lake Travis.

YOUR IMPACT IN STORIES



A Gift of Tamales: Hope in Lake Travis

When Partners in Hope first met Delores, she was overwhelmed with life-threatening health issues. At the time, the only resource we could connect her with was our meal delivery program. Instead of turning inward, she welcomed the volunteers who delivered weekly meals. After many medical appointments and prayers from these volunteers, Delores is now healthy and doing well!

Before Christmas, PIH staff asked Delores how we might support her and her family with a gift. She said she would like to share some tamales with her neighbors, so we provided a grocery gift card, which she used to prepare dozens of tamales with love. As she visited with neighbors to deliver them, many asked how much she was asking for the tamales. Delores responded that they were a gift from her, from Partners in Hope, and from the Lord. Like fishes and loaves, God multiplied Delores' offering to bless her community.

Everybody Needs Help: Answered Prayer in Cedar Park/Leander

When we first met Brian and Belinda, they had given up hope, feeling overwhelmed with life's circumstances. They had given up their livelihood to care for the needs of their family, dismissing their own. They went from being able to help others to not being able to put food on their own table and having their utilities turned off at their home.



Now Brian and Belinda welcome people from all over the area to visit their home, to laugh, to pray, and to help one another. Reflecting on this new attitude, Brian shared, "You took someone who just really can't stand being around people and made a change." Belinda agreed, "You're letting us know that there are people who still care enough to spend their time, and sometimes their own money, to help. God hears His children wanting help and He sends it." The community coming together to surround them has helped restore hope. Brian added, "We all need help. It's not something that affects just the poor or the sick. Everybody needs help at some point."

PARTNERSHIPS

Partners in Hope works with a spectrum of churches, nonprofits, and other ministries in Central Texas. Below are the organizations we work with the most, but we are grateful for all the groups and individuals who help us address social isolation.

LAKE TRAVIS

Churches

ACTS Church Lakeway
Austin Christian Fellowship
Austin Ridge Bible Church
Bee Creek United Methodist Church
Emmaus Catholic Church
Episcopal Church of the Cross
Hope Rock Church
Lake Travis United Methodist Church
Lakeway Church
LifeAustin
Marshall Ford Fellowship
River in the Hills Church
Zao Church

Community Organizations

Cornerstone Restoration
Emmaus Social Outreach Ministries
Helping Hands Crisis Ministry
Hill Country National Charity League
Ladies of Charity
Lake Travis Community Library
Lake Travis Crisis Ministries
Lake Travis Labor of Love
Lions Club Mobile Meals
Lake Travis United Methodist Women
National Charity League Lake Travis
St. Vincent de Paul Society
Young Men's Service League: Cavaliers, Four Points, Lake Travis, & Vipers

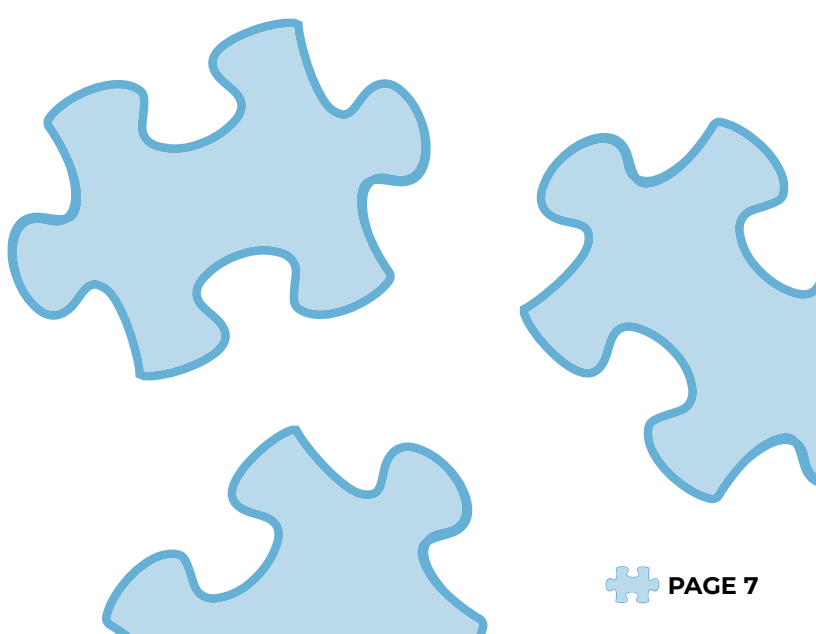
CEDAR PARK/LEANDER

Churches

Austin Christian Fellowship
Bethany United Methodist Church
Hill Country Bible Church
Life.Church Leander
New Hope First Baptist Church
SOMA Austin

Community Organizations

Brighter Days Clothes Closet
Christian Resource Center
Hill Country Community Ministries
Hill Country National Charity League
Leander Code Enforcement
Reveal Resource Center
River City Hope Street
St. Vincent De Paul Society
Young Men's Service League: Cedar Park & Knights



VOLUNTEER CONNECTORS: BEN AND GUDRUN SKOLDEBERG



Ben and Gudrun, seen in the middle in the gray and brown jackets, listen to instructions for a workday and prepare to join in an opening prayer.

Ben and Gudrun joyfully serve our families in both the Lake Travis and are amazing volunteers who serve Cedar Park/Leander areas. While they love spending time with their family and friends, they also take time to serve their community. We are always excited to see their faces at a Community Workday! We asked them to share some thoughts about their experience as volunteers:

"We found out about Partners in Hope through our church and like its stated mission. We enjoy hands-on projects, so we love participating in workdays. PIH has a goal to also make a lasting change in people's lives, which has been very important in our previous volunteer involvements.

We are always surprised to see people of all ages volunteering and how well we work together. Another surprise is how many people in our area are without hope and live in isolation, regardless of financial status.

We decided to give our first donation after seeing the results of PIH and the genuine love and respect the staff has for the families they walk with. We hope that 2023 will show even more evidence of permanent life changes through God's loving intervention."



Gudrun (left) at our May 2022 Community Workday in CPL, serving alongside another volunteer, Lynn Rogers.

THE POWER OF "WITH" RELATIONAL MINISTRY TRAININGS

This time last year we announced our relational ministry training workbooks, designed to be used in conjunction with in-person trainings. We were delighted with the response we had to these trainings, and we are grateful we had the opportunity to equip 250 volunteers through 12 trainings hosted by various organizations.

Our ministry has been one of learning and adapting as God leads. Over the years we have seen the need to be more focused on connecting people intentionally with those who are isolated. We have also learned that most people do not feel confident they can come alongside another person, especially someone they do not know. Training in a relational approach helps participants feel ready to walk with others in a healthy and positive way.

Both of our workbooks address the "why" and "how" of relational ministry and explore the Biblical basis for adjusting the way we serve others by building relationships with people in need rather than exclusively providing one-time, transactional support.

We are excited to offer even more community trainings in 2023. Please contact us if your church or nonprofit is interested in hosting a training.



The Power of "With": Making a greater impact with a relational ministry culture is a workbook for churches and faith-based nonprofits that will help you think differently about your serving model, develop partnerships with other ministries, and identify resources in your community. You will also gain an understanding of the importance of training your volunteers so your organization can better walk "with" others.

Walking with Others: Increase your impact by shifting the way you serve your community guides volunteers through eight practical steps to strengthen your understanding of how to walk with your neighbors and grow your confidence to offer Christ in a relational way.



LETTER FROM THE BOARD PRESIDENT

God's Faithfulness

This time last year, we weren't sure what our expansion into Cedar Park/Leander would look like, but the fruit of our ministry there has far exceeded our expectations. We have ramped up program offerings in that area much quicker than expected, with support from many new community partners, churches, and volunteers.

In addition, the deepening of ministry in the Lake Travis area has also been remarkable. Our families in both areas are meeting new friends, connecting to needed resources, and most importantly, finding the flame of hope renewed within them.

We are excited for 2023, as we continue to expand our ministry. We are also thrilled to roll out our Life Coaching Program, which will provide a "next step" opportunity for our families to move forward in life with skills and confidence.

God is faithful! Thank you for being a part of this ministry.



A handwritten signature in black ink that reads "James E. Wilhelm III".

James (Jamie) E. Wilhelm, III
President

LEADERSHIP TEAM

Board of Directors

Jamie Wilhelm, Board President

Executive Vice President, American Campus Communities

Brian Oaks, Vice President

Patent Attorney, McDermott, Will & Emery

Laurie Hockenberry, Secretary

Retired, Finance Industry

Bob Corless

Retired Engineer, Chevron

TC Cornell

Retired Product Director, State Auto Insurance Company

Dallas Gregory

Operations Manager, MLD Services

John Mason

Retired, Healthcare/Information Services

Keith Morton

Regional Director and President of the Asset Management Center, National Credit Union Administration

Tyler Lewis

Vice President, TAB Technologies

Renee Philips

Retired, Banking Industry

Susan Priddy

Marketing Strategist and Writer

Rita Thompson

Discipleship Coordinator, Bethany UMC; Retired, Telecom Industry

Staff

Matt Peacock

Executive Director

Diahn Ehlers

Assistant Director

Denise Ray

Community Connections Manager, Lake Travis

B.J. (Bruce) Rogers

Ministry Director, Cedar Park/Leander

Carissa Bickling

Community Connections Manager, Cedar Park/Leander

Jill M. Johnson

Director of Operations

Amy Williams

Finance Administrator

Dave Schaerdel

Equipment Manager

FINANCIAL SUMMARY

2022 Total Budget:

\$532,645

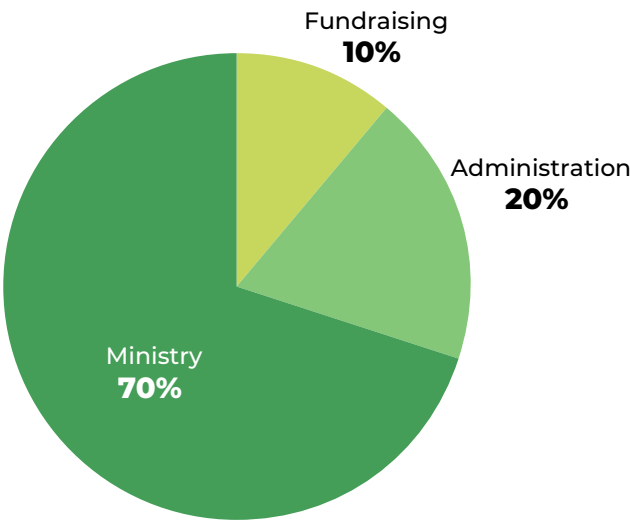
Total Actual Revenue: \$531,021
Total Expenses: \$465,289

2023 Total Budget:

\$670,920*

**The 2023 budget reflects a full year of personnel and ministry costs related to our Cedar Park/Leander expansion, as well as the addition of Life Coaching to our offered programs.*

2022 STATEMENT OF FUNCTIONAL EXPENSES



2022 STATEMENT OF FINANCIAL POSITION

Total Assets: **\$473,038**
Total Liabilities: **\$ 12,255**
Total Net Assets: **\$460,782**

PIH CORE VALUES

We frequently review our core values after interacting with our families to make sure we are offering relational care that honors the teachings of Jesus.

Christ-Centered: Jesus is the ultimate example of loving your neighbor, and we seek to follow His example.

Community: We bring neighbors together so that no one has to navigate life alone, everyone knows they have value, and all recognize that we each have a contribution to make in the community where we live.

Compassion: We make the effort to know and understand everyone so we can give care and comfort.

Connection: We offer the best of ourselves when we connect with other people in the community through our unique gifts, talents, and resources.

Commitment: We give relationships the time and effort necessary for God's redemptive work to mature each of us as we move forward together.



Found in the yard of one of our families at a Community Workday, this banner reminds us that God is working in people's lives long before PIH arrives!

Want to learn more or donate? Scan this code, which will take you to our website:



Partners in Hope – Texas
Mailing Address:
7301 Ranch Road 620 N
Suite 155-186
Austin, Texas 78726-4537
512-637-0388
www.pihtx.org
info@pihtx.org



Our mission is to empower communities to work together to eliminate social isolation and the hopelessness it causes. Imagine with us a world where no one has to navigate life alone!

Partners in Hope – Texas is 100% community supported. We are a 501(c)(3) nonprofit organization, and all donations are tax-deductible to the extent allowed by law.

