



ANNOUNCING... HOPE IN MOTION!

*“And I pray that you, being rooted and established in love, may have the power together with all the Lord’s holy people, to grasp how **wide** and **long** and **high and deep** is the love of Christ.”*

— Ephesians 3:17-18

After celebrating 10 years of service to the Lake Travis area, Partners in Hope (PIH) is expanding into the Cedar Park/Leander area in 2022 to advance our mission, which is to empower communities to work together to eliminate social isolation and the hopelessness it causes.

With your prayers and support, we will expand our ministry to go:

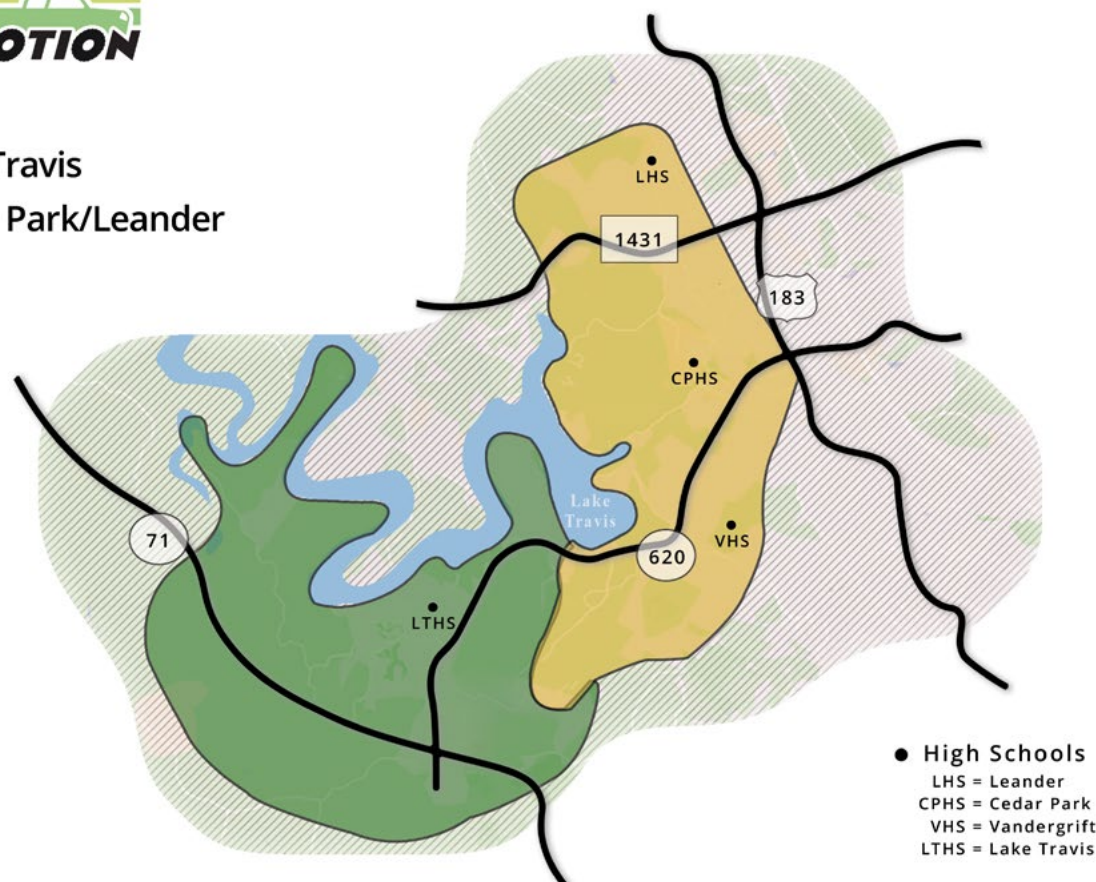
- **Wider:** giving hope to socially isolated neighbors with a second ministry area
- **Longer:** loving our neighbors through lasting relationships and an ongoing presence in both communities
- **Higher and Deeper:** growing hearts through more ministry resources, relationships, and partnerships

Our loyal partners — volunteers, donors, churches, and other organizations — will join us on this journey as **together** we share the love of Christ.



- Lake Travis
- Cedar Park/Leander

MINISTRY AREAS



Giving Hope. Loving Neighbors. Growing Hearts.

TRAVELING TOWARD HOPE

Stories of Connection:



Vivian — Age 92

Vivian joined the Partners in Hope family in July 2011. She has lived independently in the Lake Travis area for over 35 years and has no nearby family members. She deals with health issues related to aging and is steadily losing her vision and hearing. Because of those changes, she recently gave up driving. *Since connecting with PIH, Vivian:*

- Has new friends who make sure she has a ride to medical appointments and the grocery store.
- Has neighbors who regularly help with yard clean-up and care, especially after the February snowstorm.
- Comes to fellowship gatherings on a regular basis and always brings something she baked.
- Was connected to a volunteer caller during the first months of COVID.
- Receives PIH resources for home repairs and maintenance.
- Welcomes prayers from PIH volunteers.
- Experienced her first-ever birthday party at age 90 and was treated to a drive-by parade on her 91st birthday!



Joe and Amy — Ages Mid-30s

Joe has been a part of the Lake Travis community for most of his life. However, living in an RV park in Spicewood and working long, irregular hours have become barriers to maintaining relationships. Amy is new to the area, so her connections outside of her work were marginal. We met them both in early 2021 just as they found out they were pregnant. As Amy transitions to staying home with the baby full-time, they are adjusting to a new level of income. *Since connecting with PIH, they:*

- Know neighbors in the community who support them.
- Connected with a church small group that provided food and fellowship after their baby was born.
- Come to PIH fellowship gatherings on a regular basis.
- Receive meal deliveries through PIH and some funding to cover the cost of diapers.
- Understand how to access needed community services, including healthcare.
- Took advantage of Christian counseling paid for by PIH.
- Have resources to help Joe finish his high school diploma, including a new laptop provided by PIH.
- Asked PIH to help extended family members with a temporary need.
- Were referred to an organization that provides low-cost pet spaying.
- Are raising their new baby girl with community and hope, rather than alone!





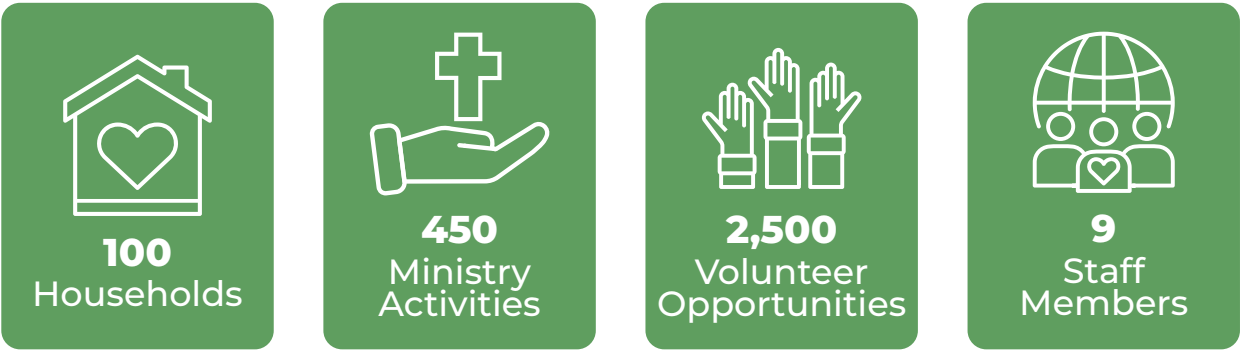
ACCELERATING OUR IMPACT

Annual budget needed to serve **one community**: **\$280,000**




**In 2021*

Annual budget needed to serve **two communities**: **\$600,000**



**Projected goals by end of 2024*



THREE-YEAR NEED
TO SERVE BOTH
COMMUNITIES WITH
EXPANDED MINISTRIES:

\$1.8 million

READY TO FUEL OUR MOMENTUM?

Here's how YOU can be a **Hope in Motion Investor**:

- Give a major gift to accelerate our impact
- Make a recurring monthly donation
- Increase your annual gift
- Commit to a multi-year giving pledge
- Include PIH in your year-end giving
- Consider gifts of stock or planned giving options
- Explore possible workplace-donation matches
- Offer your skills and talents by becoming a volunteer
- Join our Hope Angels Prayer Team

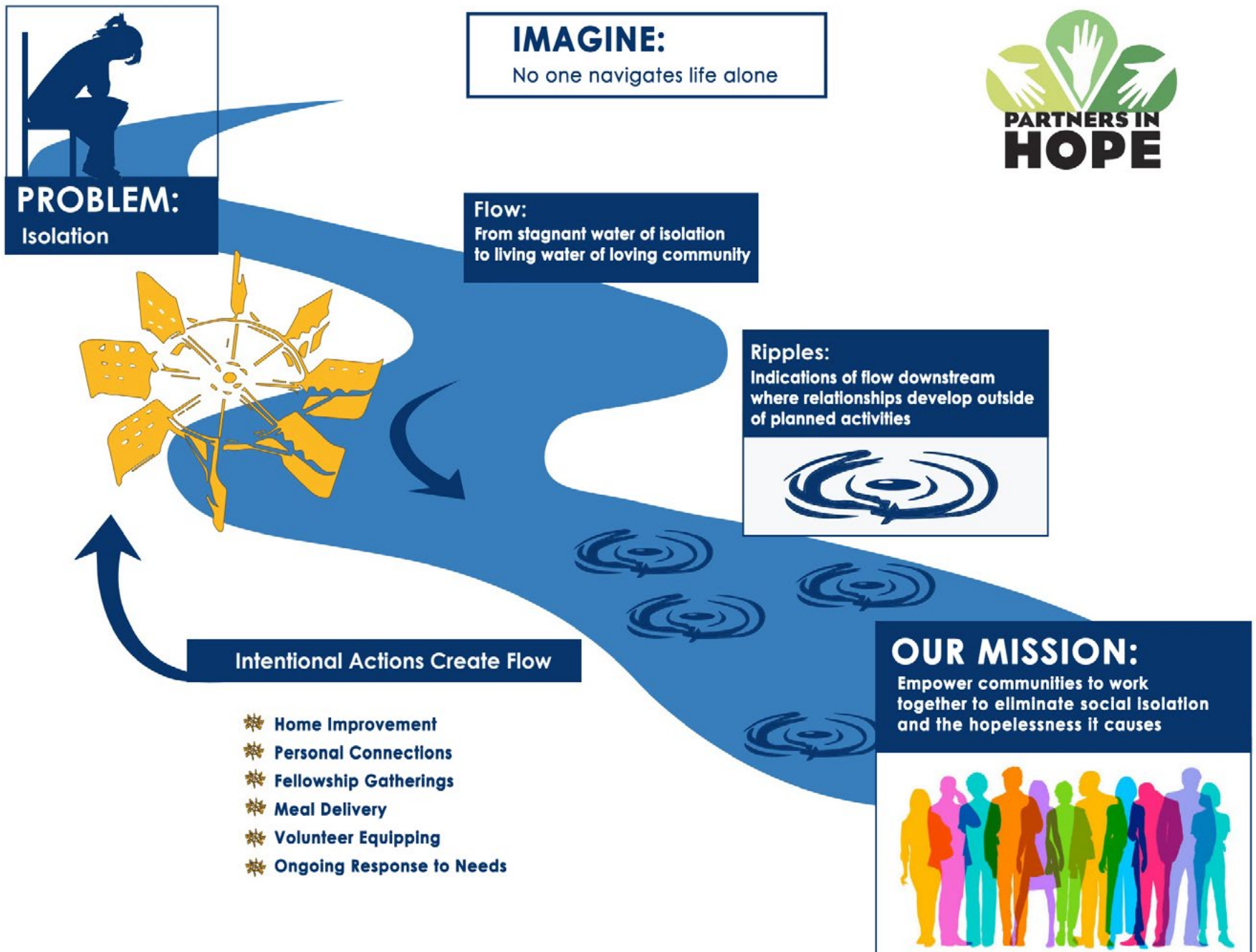


Visit **www.pihtx.org** to **set up your gift online**, or complete and return a donor card.

You can also pay by check or email us at **info@pihtx.org** for assistance.



OUR MISSION: LEARN MORE!



SCAN CODE
TO DONATE

Partners in Hope – Texas
Austin, Texas 78734
www.pihtx.org
info@pihtx.org

