



PARTNERS IN HOPE

2023 IMPACT REPORT

**Imagine with us a world where
no one has to navigate life alone!**



A LETTER FROM OUR EXECUTIVE DIRECTOR

A Cycle of Giving and Receiving

“Praise be to the God and Father of our Lord Jesus Christ, the Father of compassion and the God of all comfort, who comforts us in all our troubles, so that we can comfort those in any trouble with the comfort we ourselves receive from God.” — 1 Corinthians 1:3-4 (NIV)

At PIH, we work to create partnerships in a way that helps people understand how their gifts are needed in God’s Kingdom. Everyone belongs and everyone is valuable in God’s eyes. When we observe how our volunteers interact with our families, we notice that giving is never a one-way street. Gifts of friendship, time, prayer, and resources move back and forth in a continuous flow.

At times we are on the receiving end of help, and other times we are the helper. We at PIH try to encourage everyone who is part of our ministry to understand that our life experiences, in both times of hardship and joy, can be used to comfort others.

At a recent Fellowship Dinner, we overheard comments such as these:

- “I used to be the one who served and donated, but now I’m in a place where I need to accept help. It’s hard, but I’m grateful to those who are walking with me in this time.”
- “When I think about how much Partners in Hope has done for me, I could cry. I’m so grateful I’m now in a place where I can serve others!”
- “One of the reasons I openly share that I’m in recovery is because I know other people need to hear my story and receive the same kind of assistance that changed my life.”
- “Before Partners in Hope came into my life, I really didn’t have any friends. Now, I regularly get together with Sally and Barb, and we check on each other often. In fact, Sally, don’t forget we need to take Barb to her doctor’s appointment on Monday!”

Because God cares for us, we can care for others. None of us can navigate life alone. And because of your support, our ability to bring people together while also facilitating involvement with local churches has increased.

We are excited to share our 2023 Impact Report with you so you can see how your “PartnerShip” has changed hearts and weaved together the lives of people who otherwise would never cross paths. Thank you for encouraging this relational ministry that moves families out of social isolation and into life-giving community.

In Christ,



Matt Peacock

Matt Peacock
Executive Director

PARTNERSHIP IMPACTS

Partners in Hope works with a wide spectrum of churches, nonprofits, and organizations in Central Texas. Listed below are the ones we work with the most, but we are grateful to all the businesses, groups, and individuals who help us address social isolation.

Lake Travis/Spicewood Partnerships:

Churches

*ACTS Church Lakeway
Austin Christian Fellowship
Austin Ridge Bible Church
Bee Creek United Methodist Church
Cornerstone Church ATX
Emmaus Catholic Church
Episcopal Church of the Cross
Hope Rock Church
Lake Travis United Methodist Church
Lakeway Church
LifeAustin
Marshall Ford Fellowship
Whitestone Church
Zao Church*

Community Organizations

*Cornerstone Restoration
Emmaus Social Outreach Ministries
Helping Hands Crisis Ministry
Hill Country National Charity League
Knights of Columbus
Ladies of Charity
Lake Travis Community Library
Lake Travis Crisis Ministries
Lake Travis Labor of Love
Lake Travis United Methodist Women
National Charity League Lake Travis
St. Vincent de Paul Society
Wesley Nurse Program—
Methodist Healthcare Ministries
Young Men's Service League:
Cavaliers, Four Points, Lake Travis, & Vipers*

Cedar Park/Leander Partnerships:

Churches

*ACTS Church: Leander
Austin Christian Fellowship
Bethany United Methodist Church
Hill Country Bible Church
Life Church Leander
Life Family Church
New Hope First Baptist Church
North Way Church—Leander
SOMA Austin
Trinity Community Church—Cedar Park
Twin Lakes Fellowship Church*

Community Organizations

*Angels Are Moving
Brighter Days Clothes Closet
Cedar Park Victims' Services
Christian Family Counseling
Christian Resource Center
Community Resource Center—Williamson County
Hill Country Community Action
Hill Country Community Ministries (Fresh Food For All)
Hill Country National Charity League
Leander Code Enforcement
Leander Victims' Services
Opportunities for All—Williamson County
Reveal Resource Center
River City Hope Street
Seniors Helping Seniors
St. Vincent de Paul Society
Young Men's Service League: Cedar Park & Knights*

WALKING WITH OTHERS IMPACT

People often associate Partners in Hope with our public-facing ministry activities, such as Community Workdays and Meal Deliveries. We are extremely grateful for the volunteers and churches who drive these activities, as they help us introduce the families we work with to a caring community.

What people often don't see, however, is the quiet ministry that happens throughout the week. While off the radar, the case management support our staff provides is vital to moving individuals from social isolation to life-giving community.

On the following pages, you'll see footprints that represent those who walk alongside our clients. As they increase, so does a client's connection to community. We are excited to share a few stories that will help you understand how connection can change lives!



EMPOWERING COMMUNITIES

PROBLEM: ISOLATION



2 Flow: Socially isolated neighbors move toward living life in a loving community, as volunteers also move into the flow and are inspired to pursue more relational ministry opportunities.

1 Ministry: Intentional actions create change, as socially isolated individuals move from stagnant water into a welcoming current of community.

- Personal Case Worker
- Living Condition Improvement
- Fellowship & Discipleship Gatherings
- Wellbeing Programs
- Volunteer & Community Engagement

3 Ripples: Unexpected connections are formed as relationships develop beyond intentional activities. Community grows as volunteers and neighbors work together to meet needs and socialize.

OUR VISION:

Imagine...no one navigates life alone.

OUR MISSION:

We empower communities to work together to eliminate social isolation and the hopelessness it causes by creating connections to life-giving community.

SOLUTION: CONNECTION

We see evidence of God's design for relationship-based communities, as connections grow and social isolation is eliminated.





LAKE TRAVIS

From Brokenness to Healing: Tina's Story

PROBLEM: ISOLATION

When we met Tina, she **shared that she was feeling isolated and needing to connect** with other healthy adults in her Lake Travis community. She was coming out of a broken relationship and wanted to advocate for herself and her children.

Partners in Hope staff met with Tina and **helped her establish goals** for herself and her family, such as **getting connected to emotional health resources, bill pay assistance, and a local church**. These achievable action steps were developed to get Tina connected with helpful people and resources in her community.

Tina **connected for the first time with a local GriefShare group** that supported her as she navigated the holiday season. **PIH helped her find a Christian counselor** to begin working on her goals. Tina was also able **to connect with a local nurse** to address some medical conditions and received support and education through the process.

Soon after, Tina **connected with a divorce recovery group at a local church and attended her first PIH Fellowship Dinner** with her children.

After she wrapped up **DivorceCare**, she began to **regularly attend Sunday services at that church**. Tina became an **active participant in PIH Coffee Connections and Fellowship Dinners** and has been able to share her story with other ladies in the community. She has also gotten her children engaged in several different community events.

SOLUTION: CONNECTION

Through God's goodness and grace, Tina is finding **ways to serve in her own Lake Travis community**. She **has been empowered to make connections with those around her and point others to useful resources**. Currently, Tina is working with a team of ladies in the community to **help with a service project for single mothers in the area**.



CEDAR PARK

Unexpected Connections: Donna's Story

PROBLEM: ISOLATION

Donna was living life alone in Cedar Park when PIH staff first met her. Although she has children in the area, she rarely sees family. **Donna is losing her vision** due to a degenerative illness and can no longer see well enough to read or drive. She shared how she had moments of overwhelming sadness and felt abandoned and alone. Donna was frustrated that **she had no one she could talk to or call when she needed help.**

PIH staff paired Donna with a Walking Partner, which is a volunteer who is specifically trained to come alongside one of our clients in a way that models support, care, and friendship. This volunteer, Tammy, checks on Donna on a regular basis and reads the Bible with her.

Around the same time, **a volunteer named Bonnie joined her first Community Workday to serve a different neighbor that PIH was helping.** Her exposure to the ministry of Partners in Hope spurred her to get more involved.

In a wonderfully serendipitous moment that God designed, **Donna came to her first Women's Coffee Connection and was introduced to Bonnie.** Turns out, Bonnie had taught visually impaired individuals for years and had just retired! They exchanged contact information and later **connected to discuss how Bonnie could help Donna with her vision issues.**

Bonnie helped Donna navigate some basic, daily life frustrations, such as how to work a recently donated space heater. She also **connected Donna to resources that will help her move forward** despite vision problems. Bonnie offered to drive Donna to her **first Fellowship Dinner, where they both met new friends.** PIH staff also **connected Donna to a Life Coach** who is helping her set and achieve goals.

SOLUTION: CONNECTION

We continue to be **amazed at the ripple effects** we see that extend well beyond intentional activities!

YOUR 2023 IMPACT IN NUMBERS



68 Households
Served

*...leading to decreased social isolation
and increased social connections in
Central Texas!*



53 Community
Serving Events

*...such as Community Workdays that create
safer and cleaner living conditions, leading
to more of our families feeling comfortable
inviting neighbors onto their property and
instilling pride for their homesteads.*



383 Meal
Deliveries

*...for extra support and mid-week
conversations and connections.*



89 Discipleship
Gatherings

*...such as Fellowship Dinners and Coffee
Connections, leading to new friendships
and sharing of life through devotionals.*



155 Community
Resource Connections

*...such as counseling, coaching, healthcare, job assistance,
and church programs, leading to better wellbeing and
increased confidence to engage in society.*

VOLUNTEER IMPACT: ANNE DURRETT



Anne started working with PIH in early 2023, and loved the mission so much, she quickly moved into a Walking Partner role. Our Walking Partners are paired with one of our clients and commit to checking in on them on a regular basis, modeling friendship and care.

These volunteers receive specific training so they have the tools needed to walk alongside others in a meaningful way.

Anne was eager to share why she loves supporting the PIH ministry.

What attracted you to Partners in Hope?

I love that Partners in Hope isn't just about volunteering for a one-time service project for someone. Walking alongside someone as a companion is such a wonderful concept!

Why did you get involved with PIH?

At one of my church homegroup meetings, our leader asked if anyone would like to visit with a 90-year-old lady who needed connection. My mom in South Carolina had just gone through a rough time medically and had recently passed away. I would have loved for her to have someone to visit her and just sit and talk with her, so I volunteered to do this.

What has surprised you most about volunteering with PIH?

I sometimes feel like my motives are selfish, because I always seem to get so much more out of the time spent visiting with my new friend than I feel like I'm giving.

What makes you keep volunteering with PIH?

The Partners in Hope staff is truly amazing! I LOVE the time I spend with my sweet friend—my Walking Partner. And the “Walking with Others” volunteer training that Matt Peacock leads is just incredible. I highly, highly recommend it!



COMMUNITY IMPACT IN NUMBERS



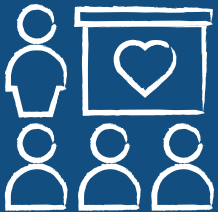
546 Active
Volunteers

...leading to more people serving and loving neighbors.



4,980 Volunteer
Hours

...worth \$158,364 when multiplied by the 2023 nonprofit hourly value of \$31.80.



17 Relational Ministry Training Workshops
283 Training Participants

...now even more volunteers who wanted to serve but didn't know how are equipped to walk alongside their socially isolated neighbors!



18 Community
Presentations

...so that community members in our service areas are better educated about the negative effects of social isolation.



LETTER FROM THE BOARD PRESIDENT

Investments in God's Kingdom

The PIH Leadership Team often reminds one another that our investments matter. Even when we don't see the fruit of the seeds we plant, we are confident that God will grow those seeds in due time.

One of our favorite quotes, attributed to Bishop Ken Untener, says, "We accomplish in our lifetime only a tiny fraction of the magnificent enterprise that is God's work. Nothing we do is complete, which is a way of saying that the Kingdom always lies beyond us."

Fortunately, there are many times when we do get to see how God's spirit has moved in our communities. Neighbors suffering from subpar living conditions now have new roofs, thanks to the donations of businesses and volunteers. Families who were dealing with emotional, mental, and financial crises now have access to people who can help them move forward in life. Individuals who were living in deep loneliness and pain are now connected to churches and friends. And community members who weren't sure how to help their neighbors have found meaningful ways to serve while making new friendships.

Thank you for investing in the lives of our neighbors. How blessed we are to be part of this amazing Kingdom work!



James E Wilhelm III
James (Jamie) E. Wilhelm, III
President

LEADERSHIP TEAM

Board of Directors

Jamie Wilhelm, Board President
Executive Vice President, American Campus Communities

Brian Oaks, Vice President
Patent Attorney, McDermott, Will & Emery

Laurie Hockenberry, Secretary
Finance Industry (retired)

Bob Corless
Chevron Engineer (retired)

Don Crook
President, Combined Benefits Group

Diahn Elhers
Life Coach, RiverRock Coaching

Rich Gilchrist
IT Professional (retired)

Dallas Gregory
Operations Manager, MLD Services

John Mason
Healthcare Industry (retired)

Keith Morton
Regional Director, National Credit Union Administration

Susan Priddy
Marketing Strategist and Writer

Shannon Scott
Senior Consultant, Employee Benefits, Aon

Staff

Matt Peacock
Executive Director

Carissa Bickling
Ministry Director, Lake Travis/Spicewood

Rebecca Williams
Community Connections Manager, Lake Travis/Spicewood

B.J. (Bruce) Rogers
Ministry Director, Cedar Park/Leander

Susanna Barboni
Community Connections Manager, Cedar Park/Leander

Jill M. Johnson
Director of Operations

Catie Franklin
Special Projects Manager

Amy Williams
Finance Administrator

Dave Schaerdel
Equipment Manager



YOUR FINANCIAL IMPACT

2023 Finance Report

Total Actual Revenue:

\$466,281

Total Expenses:

\$564,447*

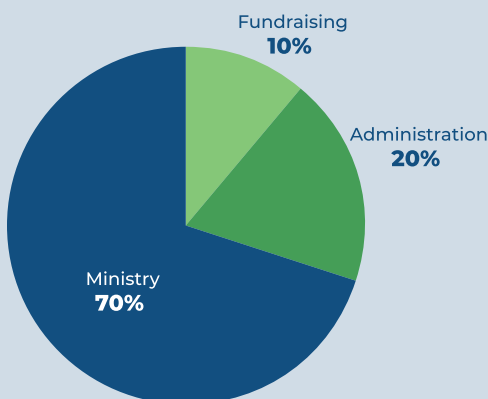
2024 Total
Approved Budget

\$638,291**

**Expenses exceeding income was expected, and reserves set aside for this purpose were utilized.*

***First full year of expansion budget with fully staffed personnel; plans to grow our donor base are underway.*

2023 STATEMENT OF FUNCTIONAL EXPENSES



2023 STATEMENT OF FINANCIAL POSITION

Total Assets: **\$365,451**
 Total Liabilities: **\$ 2,834**
 Total Net Assets: **\$362,616**



Want to learn more or donate? Scan this code, which will take you to our website:



Partners in Hope – Texas

Mailing Address:

7301 Ranch Road 620 N

Suite 155-186

Austin, Texas 78726-4537

512-637-0388

www.pihtx.org

info@pihtx.org



Our mission is to empower communities to work together to eliminate social isolation and the hopelessness it causes by creating connections to life-giving community.

Partners in Hope – Texas is 100% community supported. We are a 501(c)(3) nonprofit organization, and all donations are tax-deductible to the extent allowed by law.

